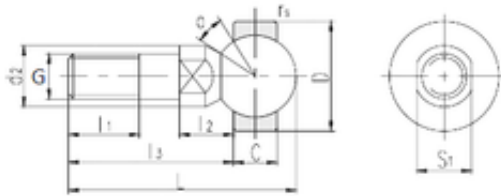




NTN Bearing Driveshaft do Brasil

LS SQDL16 plain bearings



Bearing No. SQDL16

S1	19 mm
d2	22 mm
l1 min.	23 mm
l2 max.	18 mm
l3 min.	54,5 mm
r min.	0,5 mm
C	15 mm
D	38 mm
L	76,3 mm
Thread (G)	M16 × 1,5
Angle	20 °
Weight	0,238 Kg

SQDL16 Bearing 2D drawings and 3D CAD models