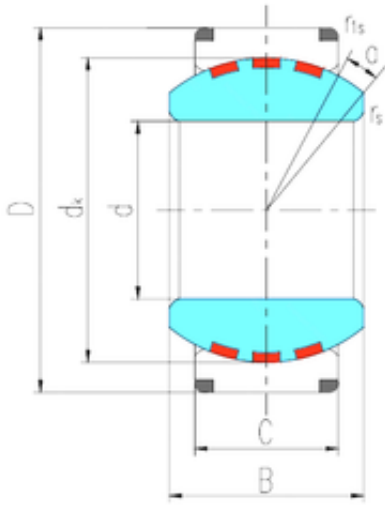




## NTN Bearing Driveshaft do Brasil



400 mm x 540 mm x 190 mm 400 mm x 540 mm  
x 190 mm LS GEC400XF/Q plain bearings

Bearing No. GEC400XF/Q

Size	400x540x190 mm
Bore Diameter	400 mm
Outer Diameter	540 mm
Width	190 mm
d	400 mm
D	540 mm
B	190 mm
C	160 mm
dk	470 mm
r min.	1,5 mm
r1 min.	4 mm
Angle	3 °
Weight	131 Kg
Basic dynamic load rating (C)	7520 kN

GEC400XF/Q Bearing 2D drawings and 3D CAD models