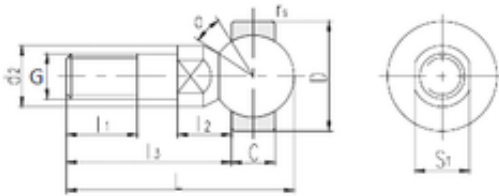




NTN Bearing Driveshaft do Brasil

LS SQDL5 plain bearings



Bearing No. SQDL5

S1	7 mm
d2	9 mm
l1 min.	8 mm
l2 max.	8 mm
l3 min.	19 mm
r min.	0,3 mm
C	6 mm
D	16 mm
L	27,5 mm
Thread (G)	M5
Angle	25 °
Weight	0,014 Kg

SQDL5 Bearing 2D drawings and 3D CAD models