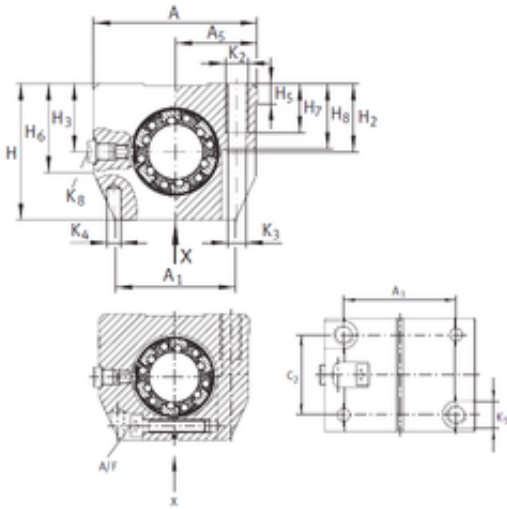




NTN Bearing Driveshaft do Brasil

INA KGNS 50 C-PP-AS linear bearings

Bearing No. KGNS 50 C-PP-AS



KGNS 50 C-PP-AS Bearing 2D drawings and 3D CAD models

| | |
|-------------------------------|---------|
| Bore Diameter | 50 mm |
| Outer Diameter | 75 mm |
| d | 50 mm |
| D | 75 mm |
| A/F | 8 mm |
| H5 | 11 mm |
| H6 | 60 mm |
| H7 | 35 mm |
| H8 | 49 mm |
| K3 | 13,5 mm |
| K4 | 10 mm |
| K5 | 20 mm |
| Thread (K2) | M16 |
| H3 | 50 mm |
| A5 | 66 mm |
| A | 132 mm |
| A1 | 108 mm |
| C | 100 mm |
| H | 105 mm |
| H2 | 50 mm |
| C2 | 50 mm |
| Weight | 2,7 Kg |
| Basic dynamic load rating (C) | 9,3 kN |