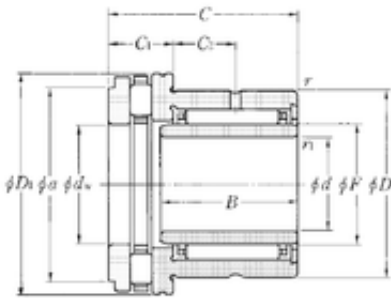
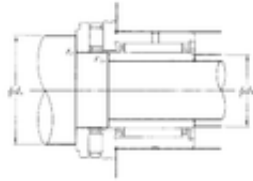




## NTN Bearing Driveshaft do Brasil

17 mm x 30 mm x 20 mm 17 mm x 30 mm x 20 mm NTN NKXR20T2+IR17 x 20 x 20 complex bearings



NKXR20T2+IR17 x 20 x 20 Bearing 2D drawings and 3D CAD models

Bearing No. NKXR20T2+IR17 x 20 x 20

Bore Diameter	17 mm
Outer Diameter	35 mm
d	17 mm
d1	20 mm
F	20 mm
D	30 mm
D1	35 mm
B	20 mm
C	30 mm
ra1 max.	0,3 mm
r min.	0,3 mm
r1 min.	0,3 mm
C1	10 mm
da min.	32 mm
db min	19 mm
ra max.	0,3 mm
C2	10,5 mm
Weight	0,105 Kg
Dynamic load rating radial (C)	16,4 kN
Dynamic load rating axial (C)	20,2 kN
Static load rating radial (C0)	27,1 kN
Static load rating axial (C0)	46,5 kN
(Grease) Lubrication Speed	2100 r/min



# NTN Bearing Driveshaft do Brasil